



Larry Mason Featured on “Inside the SCCA Podcast”

Auto Diagnostic Services



The Fiberglass Body



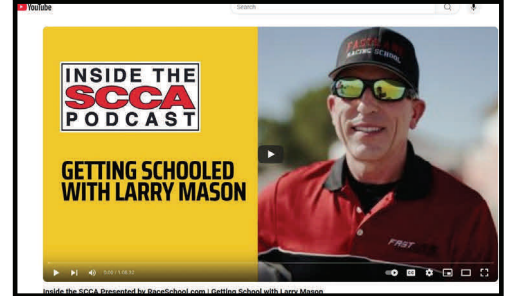
Jim Webb Motorsports



Your Name Here!

In November, Larry Mason was the featured guest on the live YouTube Podcast of “Inside the SCCA” hosted by Brian Belanski. Since Mason is a lead instructor at FastLane Racing School (the first racing school ever to be accredited by the SCCA), Belanski wanted to understand what makes FastLane unique. These are long-format podcasts and Mason answered the host’s questions for just over an hour. “I think it went fairly well,” Mason

said afterwards. “I just wanted to represent the school in a positive light and have more students come out and learn the intricacies of auto racing.” The owner of the school was very pleased with the results and that’s the bottom line! If you want to know how Mason shares his knowledge with up and coming race car drivers,



and really, anyone who wants to improve their driving skills, please go to YouTube and check it out. It’s also available as an audio file and therefore can be streamed at your convenience.



Tech Tidbits—The HANS Device

The HANS Device is an incredible safety innovation that’s been around for years. The acronym stands for “Head And Neck Support.” The device is designed to minimize the likelihood of a basal skull fracture when worn and installed properly. It is shaped like a horseshoe with a rise in the back. It’s designed to be worn over your shoulders in the race car while the shoulder harnesses lock it into place. On the raised up rear part, there is a sliding tether that attaches to each side of the driver’s helmet. The idea is that if the driver is in a frontal collision, as the

body is restrained against the seat belts (racing harness), the head keeps moving forward with that G-force. By having the tethers attached to the helmet from the HANS Device, that limits the amount of forward movement the head can make therefore minimizing the chance that the brain can be separated from the spinal cord. The most famous instance of a basal skull fracture is probably that of Dale Earnhardt at the Daytona 500 in 2001. Since then, most sanctioning bodies have made the HANS (or similar devices) mandatory safety equipment.



Mason has worn the HANS for years and recently acquired a new (to him) one that had only been used once. Despite this, Mason had the *continues on page 2*



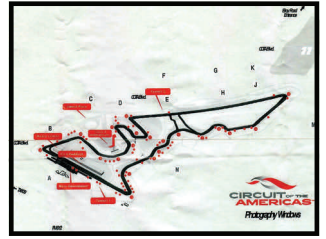
QR code link to Facebook.com/TeamLMRUSA

Inside this issue:

“Seat Time” at COTA	2
Tech Tidbits, <i>continued</i>	2
Join Team LMR Today!	2
Web Special	2

Mason Gets “Seat Time” at COTA

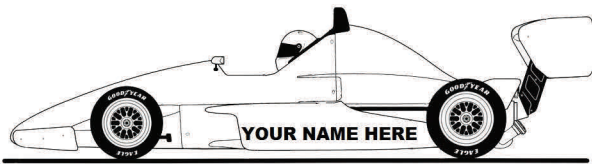
Larry Mason was invited as a professional driver to coach an auto manufacturer’s VIPs at the Circuit of the Americas Formula One race track in Austin, TX. It was a great opportunity to learn the circuit so that if his schedule has him racing there, he’ll know the track and the proper line to get around quickly. “It was amazing to me how fast and flowing the track is, but also to understand that there are numerous technical and slow turns to figure out too. The elevation change going into Turn 1 is spectacular and seeing how tight it is at the top makes you understand why there are so many incidents there,” said Mason.



COTA track map, T1 lower rt.

Tech Tidbits—The HANS Device *continued*

device inspected a re-certified in October. If you look at the picture to the immediate right you can see the technician installing the new tether and slide locator. The tether slides side-to-side to allow you to turn your head for visibility. If you look at the photo to the far right, you can see the tether installed and the helmet attachment end pieces. You can also see the gel padding that goes over his shoulders. All photos show the beautifully strong and light, carbon fiber construction. For more info on the HANS Device please visit: www.hansdevice.com



Put your company on the marketing fast track TODAY!

Web Special—If you’d like to be notified of when the next MRN Newsletter will be posted online, then send an email to info@LMRMC.com.

You’ll receive an email with a direct link to the newsletter. You can opt out at any time. We will not rent, sell, or loan out your email address.

“Unless you’re leading, the scenery never changes.” Larry Mason

VISIT

WWW.LMRUSA.COM

AND CHECK OUT WHAT’S NEW!

Join **Team LMR** today!

Team LMR is actively seeking marketing partners to join us as we race into the 2025 season. You can be a tire sponsor for just \$1,500 or an entrant for \$750. Makes a great unique gift! Hurry, next race is February 22-23!

YOUR NAME HERE! Find out how your business can generate positive Return on Investment by joining **Team LMR**.

Please contact Larry Mason today!

Thank you for your support.

We Welcome Your Feedback!

Contact us at:
info@LMRMC.com

Find us at:
Facebook.com/TeamLMRUSA
YouTube.com/TeamLMRUSA

We look forward to hearing from you soon!

Happy New Year!

Our goal is to deliver maximum, positive Return On Investment for our clients by cultivating long-term partnerships with the utmost integrity, concern, passion and commercially-viable, value-oriented results.

Copyright © 2025 LMR All Rights Reserved.